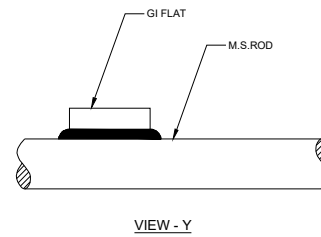
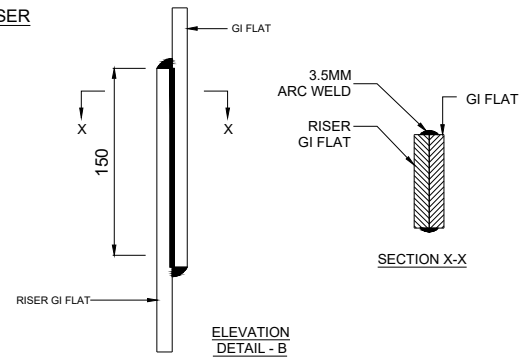
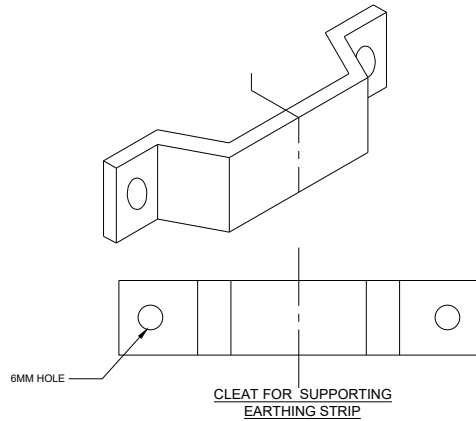
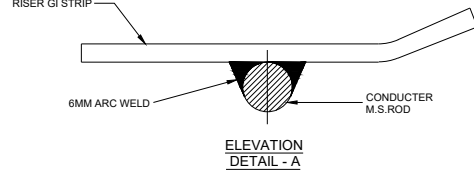
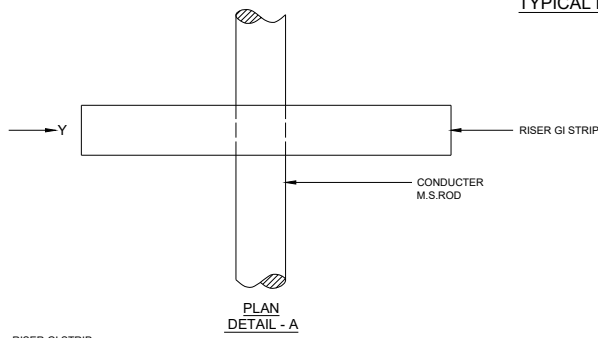


**TYPICAL DETAILS OF RISER**



**NOTE:**

1. ALL DIMENSIONS ARE IN MM UNLESS OTHERWISE SPECIFIED.
2. TYPICAL ARRANGEMENT IS SHOWN WITH RISER OF GI FLAT, IF MS ROD IS USED IT WILL CHANGE ACCORDINGLY.
3. NO. OF RISER PER SUPPORT - 3 NOS. (RISER FOR 66KV 50X6MM GI FLAT, FOR 132KV, 220KV & 400KV 75X10MM GI FLAT & FOR 765KV 75X12 MM GI FLAT)
4. WELDING SHALL BE DONE ALL AROUND TO THE EXTENT POSSIBLE.

EXECUTION PURPOSE



**GUJARAT ENERGY TRANSMISSION CORPN.LTD.**

S.P.VIDYUT BHAVAN, RACE COURSE,  
VADODARA - 390 007

**Typical Arrangement of Riser for Earthing System**

		<b>DRAWN:</b>	<b>CHECKED:</b>	<b>APPD:</b>	
R1	UPDATED FOR 765KV SYSTEM	JE (ENGG)	DE (ENGG) EE (ENGG)	I/C ACE (ENGG)	SIZE: A4
R0	FIRST PREPARATION	<b>SCALE:</b>	<b>DATE:</b>	<b>DRG. NO:</b>	<b>SHEET:</b>
<b>REV:</b>	<b>DESCRIPTION:</b>	N.T.S.	22.12.2025	<b>GETCO / E / STD / P-012</b>	04 OF 24
					REV: R1